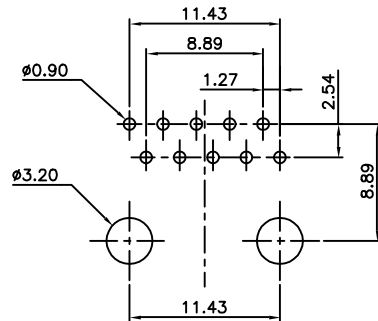
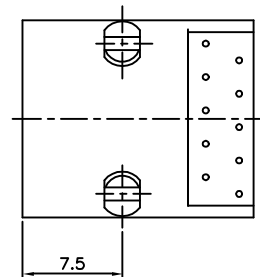
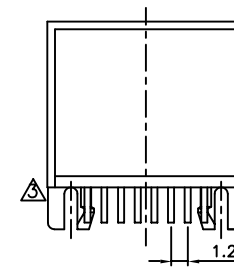
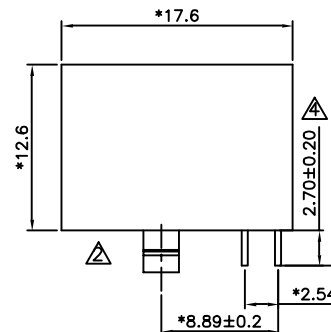
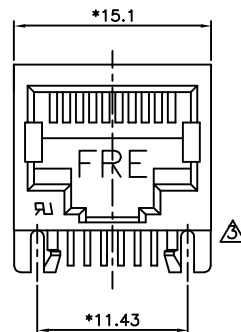


| REVISION RECORD | | | | |
|-----------------|-----|-------------|------------------|------|
| REV | ECO | DESCRIPTION | DRFT | CHKD |
| △ | | 增加料號 | SHINE 3/31/01 | |
| △ | | 圖面修正 | LFE 4/8/02 | |
| △ | | 圖面修正 | LFE 5/18/02 | |
| △ | | 圖面修正 | CZH 7/30/02 | |
| △ | | 增加料號 | CXQ 10/13/04 | |



PC Board Layout
Component Side Shown



NOTES:

ELECTRICAL:

- VOLTAGE RATING : 125 VAC RMS.
- CURRENT RATING : 1.5 AMP.
- CONTACT RESISTANCE : 30 MILLIOHMS MAX.
- INSULATION RESISTANCE: 1000 MEGOHMS MIN @ 500 VDC.
- DIELECTRIC STRENGTH : 1000 VAC RMS 60Hz, 1MIN.

MECHANICAL:

- HOUSING MATERIAL : GLASS FILLED POLYESTER UL94V-0.
- CONTACT MATERIAL : PHOSPHOR BRONZE $\phi 0.46\text{mm}$.
- PLATING : GOLD PLATING OVER NICKEL.
- OPERATING LIFE : 750 CYCLES MIN.
- PCB RETENTION PRE-SOLDER : 1 LB MIN.
- PCB RETENTION POST-SOLDER: 10 LBS MIN.

ENVIRONMENTAL:

- STORAGE : -40°C TO $+85^{\circ}\text{C}$.
- OPERATION: 0°C TO 70°C .

MATES WITH MODULAR PLUG CONFORMING TO
FCC PART 68, SUBPART F.

CUL FILE NO. E163191

△PART NUMBER: E560X-00002X

- | | | |
|-------|----------------|----------|
| 4-4C | 1-3u" | 2-6u" |
| 6-6C | 3-15u" | 4-30u" |
| 8-8C | 5-50u" | 6-Pd20u" |
| 1-10C | △ F-GOLD FLASH | |

| | | | | | |
|------------------------|----------------------------|----------------------|------------|----------------------|--|
| DETACHED LISTS | MM (INCH) | | DFTO BASS | DATE 5/23/'98 | FULL RISE ELECTRONIC CO., LTD TITLE 17.6 SIDE ENTRY ROUND PIN |
| | TOLERANCES EXCEPT AS NOTED | | CHKD | DATE | |
| | | | MFO | DATE | |
| | | | APPLV XLF | DATE 2004/11/16 | |
| .0 ± 0.2 | | ± | MATERIAL : | | |
| .00 ± 0.15 | | ± | QT'Y : | | |
| .000 ± 0.075 | | ± | FINISH : | | |
| ANGLES ± 0.5 | | SCALE : 3 : 1 | | DRAWING NO. GE563010 | |
| THIRD ANGLE PROJECTION | | DO NOT SCALE DRAWING | | SIZE A3 | REV 5 |
| | | SHEET X OF Y | | | |